

# ACEBIL

## CAMERA SUPPORT EQUIPMENT



### H60 Head

The H60 head is a perfect solution for studio configurations with a large viewfinder. The H60 head comes equipped with a zero to 3 step counter balance system and a load capacity of 5kg to 12 kg ( 11lb to 26.4lb ) making perfect counter balance quick and easy.

Equipped with tilt and pan drag functions that employ a simple "free plus 3 step" change system to select torque. The H60 features a slide plate system, illuminated LED leveling bubble, and a 100mm ball leveling head. The H60 is equipped with extendable panhandles and rubber grips for smooth, precise camera movements.

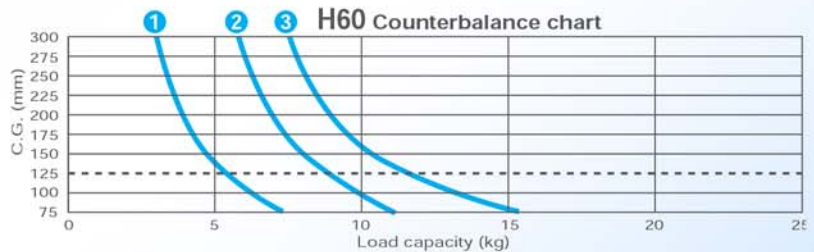
### Counter Balance

The definitive way to find the most accurate counter balance between camera/accessories and a tripod head is to actually mount the camera on the head. However, you can use this counter balance chart to get a rough idea of the correct counter balance.

The vertical axis of the chart depicts the height of the gravitational center and the horizontal axis is load weight (total weight of the camera and accessories). Based on the combination of these two elements, you can find a suitable tripod head for your camera.

When a standard lens, microphone and battery are used, the normal height of the gravitational center is approximately 125mm / 4.9" (for a shoulder type camera), 100mm / 3.9" (semi-shoulder) and 75mm / 3.0" (hand-held). The height of the gravitational center will not shift much even when a different lens or a different battery is used on the back of the camera. Please be aware that attaching a light or a monitor on top of the camera will shift the center of gravity.

<b>Payload</b>	<b>15 kg / 33 lb</b>
CB Capacity	5 ~ 12 kg / 11.0 ~ 26.4 lb
Counter Balance	0 + 3 Steps
Pan Drag	0 + 3 Steps
Tilt Drag	0 + 3 Steps
Tilt Angle	+90° / -75°
LED Level Illumination	YES (15 sec. Auto)
Camera Plate	slide plate
Plate Attachment	3/8" screw
Spare Screw	1/4" & 3/8" screw
Slide Range	+50 / -50mm
Weight	3.8 kg / 8.3 lb



### P-60GX

( H60 / T1000 / GS-3 / S50 )

Weight	7.4 kg / 16.3 lb
Height	87 ~ 164 cm / 34.3" ~ 64.6"
Ball diameter	100 mm
Section	1 stage