

ACEBIL

CAMERA SUPPORT EQUIPMENT

PD1800 Pedestal

The PD1800 is a pro pedestal system that sets up with ease in minutes. Unfold the dolly legs into the D7 dolly, and your ready to go.

Constructed with a fixed air pressure column, tightly sealed for consistent reliability. Use the column lock knob to securely stabilize the unit for extensive shooting.

Maximum load capacity is 20 kg (44 lb).

This high performance pedestal system is a perfect solution for your shooting needs.



PD70S

(H70 / PD1800 / Dolly D7 / S50 / SDC-65)
Dual Pan Handle + PB-5(L)



Case SDC-65



Case S50



H70 Head

The H70 head supports operating configurations including a wide range of digital camcorders in ENG configuration.

The H70 head comes equipped with a zero to 3 step counter balance system and a load capacity of 6kg to 15kg (13.2lb to 33lb) making perfect counter balance quick and easy.

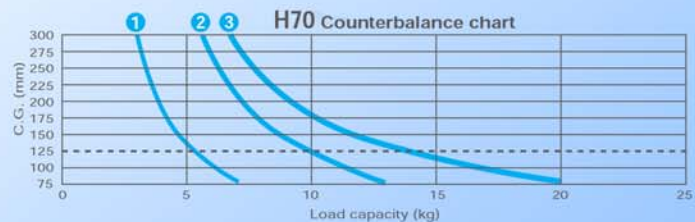
Equipped with tilt and pan drag functions that employ a simple "free plus 3 step" change system to select torque. The H70 features a slide plate system, illuminated LED leveling bubble, and a 100mm ball leveling head. The high quality and low cost make the H70 a great camera support solution.

Counter Balance

The definitive way to find the most accurate counter balance between camera/accessories and a tripod head is to actually mount the camera on the head. However, you can use this counter balance chart to get a rough idea of the correct counter balance.

The vertical axis of the chart depicts the height of the gravitational center and the horizontal axis is load weight (total weight of the camera and accessories). Based on the combination of these two elements, you can find a suitable tripod head for your camera.

When a standard lens, microphone and battery are used, the normal height of the gravitational center is approximately 125mm / 4.9" (for a shoulder type camera), 100mm / 3.9" (semi-shoulder) and 75mm / 3.0" (hand-held). The height of the gravitational center will not shift much even when a different lens or a different battery is used on the back of the camera. Please be aware that attaching a light or a monitor on top of the camera will shift the center of gravity.



Payload	17 kg / 37 lb
CB Capacity	6 ~ 15 kg / 13.2 ~ 33.0 lb
Counter Balance	0 + 3 Steps
Pan Drag	0 + 3 Steps
Tilt Drag	0 + 3 Steps
Tilt Angle	+90° / -75°
LED Level illumination	YES (15 sec. Auto)
Camera Plate	slide plate
Plate Attachment	3/8" screw
Spare Screw	1/4" & 3/8" screw
Slide Range	+50 / -50mm
Weight	3.8 kg / 8.3 lb